

# The Regional Community Institute of Northeast Florida, Inc.



Congratulations,  
Regional Leadership  
Academy Graduates!  
Welcome to the  
Institute!

# The Regional Community Institute of Northeast Florida, Inc.

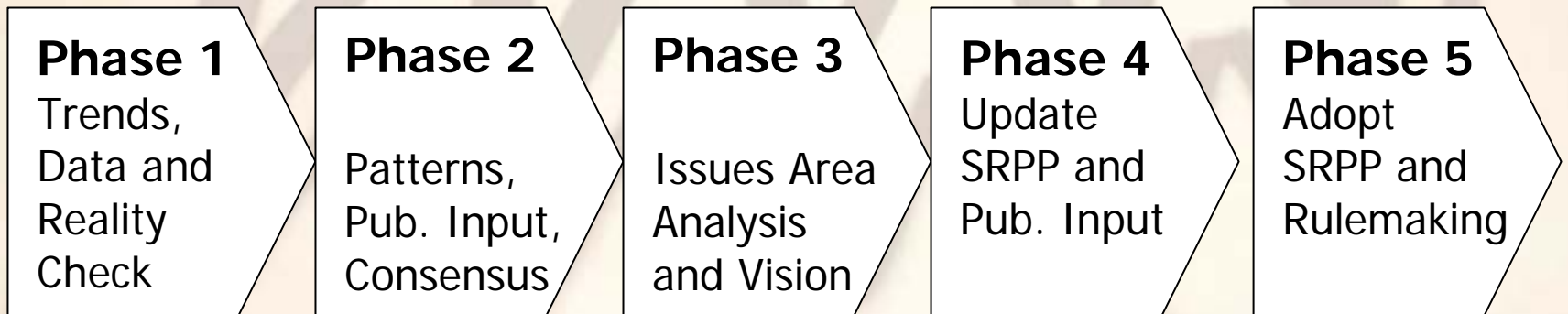


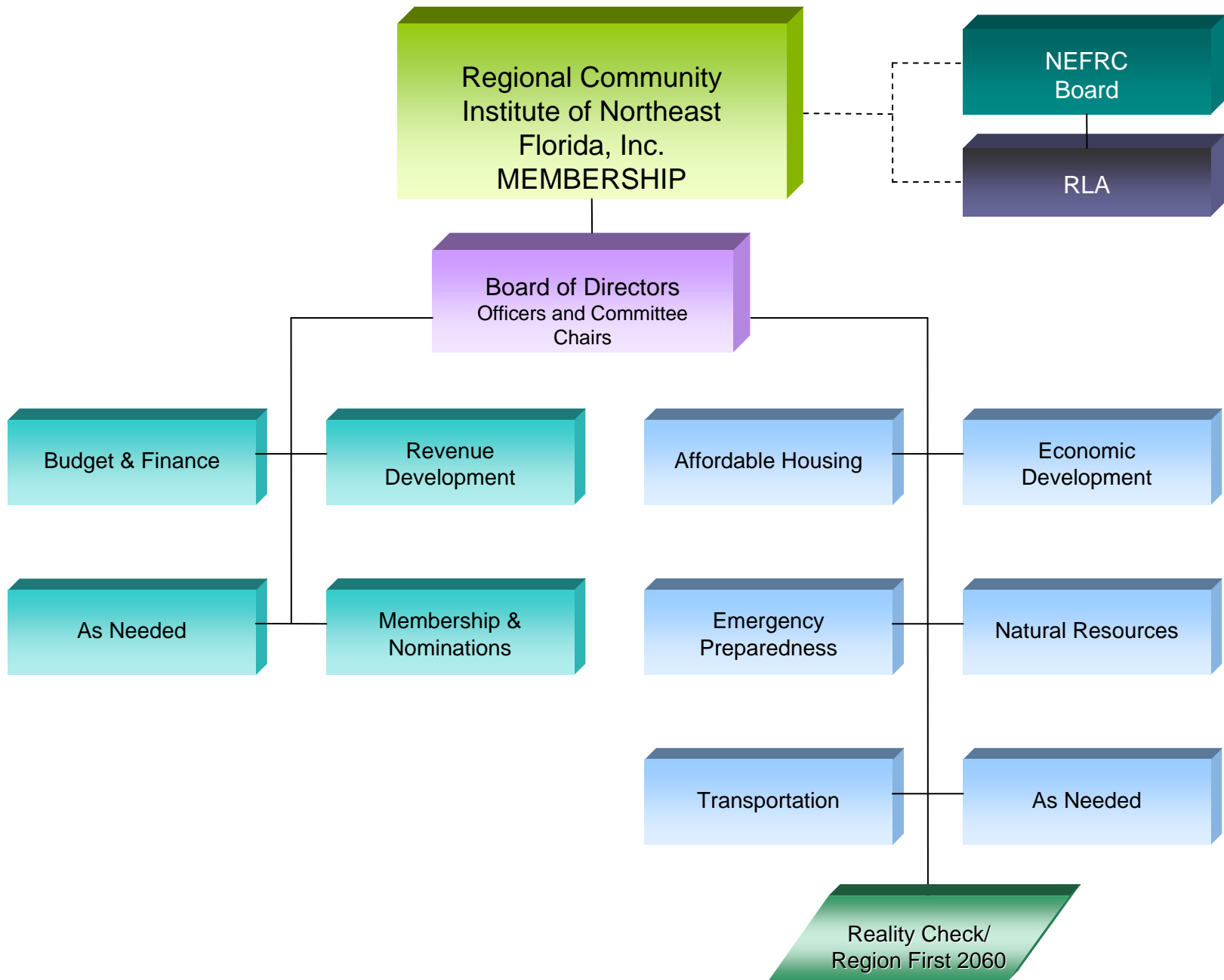
Work Program  
Presentation to Regional Community Institute  
Full Membership Meeting September 3, 2009

Margo Moehring,  
Director of Planning & Strategic Initiatives  
Northeast Florida Regional Council

# First Coast Vision Flowchart

Phases overlap  
Monitoring throughout all phases





# Sign Up for a Committee, or Recommend Someone

- Affordable Housing
- Economic Development
- Emergency Preparedness
- Natural Resources
- Transportation
- Budget and Finance
- Revenue Development
- Membership and Nominations

# Affordable Housing Committee



- **Look to Regional Housing Assessment to:**
  - Identify data and sources
- **Institute to:**
  - Determine metrics
  - Develop policies
- **Timeline:**
  - Policies 3/11

# Economic Development Committee



- **Look to Comprehensive Economic Development Strategy for:**
  - Data
  - Programs (Strategic Issues and Policies)
  - Metrics
- **Institute to:**
  - Vet Policies and Metrics
- **Timeline:**
  - 9/09 CEDS
  - Policies 3/11

# Emergency Preparedness Committee



- **Look to Statewide Evacuation Study for:**
  - Data
  - Methodology for Analysis
  - Identification of Strategic Issues
- **Institute to:**
  - Determine policies and metrics
- **Timeline:**
  - 8/10 for Study
  - Policies 3/11

# Natural Resources Committee

- **Look to RCFC for some input to:**
  - Identify data and sources
  - Suggest metrics and priority of resources
- **Institute to:**
  - Develop policies, resource list and metrics
- **Timeline:**
  - Policies 3/11

# Transportation Committee



- **Look to RCFC for some input to:**
  - Identify data and sources
  - Suggest metrics
- **Institute to:**
  - Develop policies and metrics
- **Timeline:**
  - Policies 3/11

# Input, the Vision and the SRPP (The Work Program)

- Visioning in all seven counties and Youth exercise (10-12/09)
- Input through Committees (throughout 2010)
- Regional Report Card (2010)
- Community Outreach (2-9/10)
- An Image of the Vision (10-12/10)
- Goals and Policies for the Vision (1-3/11)
- Institute consideration of Draft Vision (4-6/11)
- Institute recommendation to NEFRC for SRPP (9/11)

# Proposed Meeting Schedule

- Full Board: Quarterly (First Thursday in Sept., Dec., March, June)
- Committees: Monthly or as needed

The image features five stylized human figures in a row, holding hands. They are rendered in a light blue-grey color. Below each figure is a darker, semi-transparent shadow of the same figure, creating a sense of depth. The background is a soft, light beige gradient. The word "Questions?" is centered in the middle of the image in a black, sans-serif font.

Questions?