

The Regional Community Institute of Northeast Florida, Inc.



Work Program
Presentation to Regional Community Institute Board
Meeting September 3, 2009

Margo Moehring,
Director of Planning & Strategic Initiatives
Northeast Florida Regional Council

Reality Check First Coast Update



- Did it meet expectations?
 - Almost 300 participants, wide representation
 - Well-facilitated and scribed
 - Volunteers were great
 - Analysis worked!
 - Tables were diverse
 - Caused a buzz
 - Positive feedback

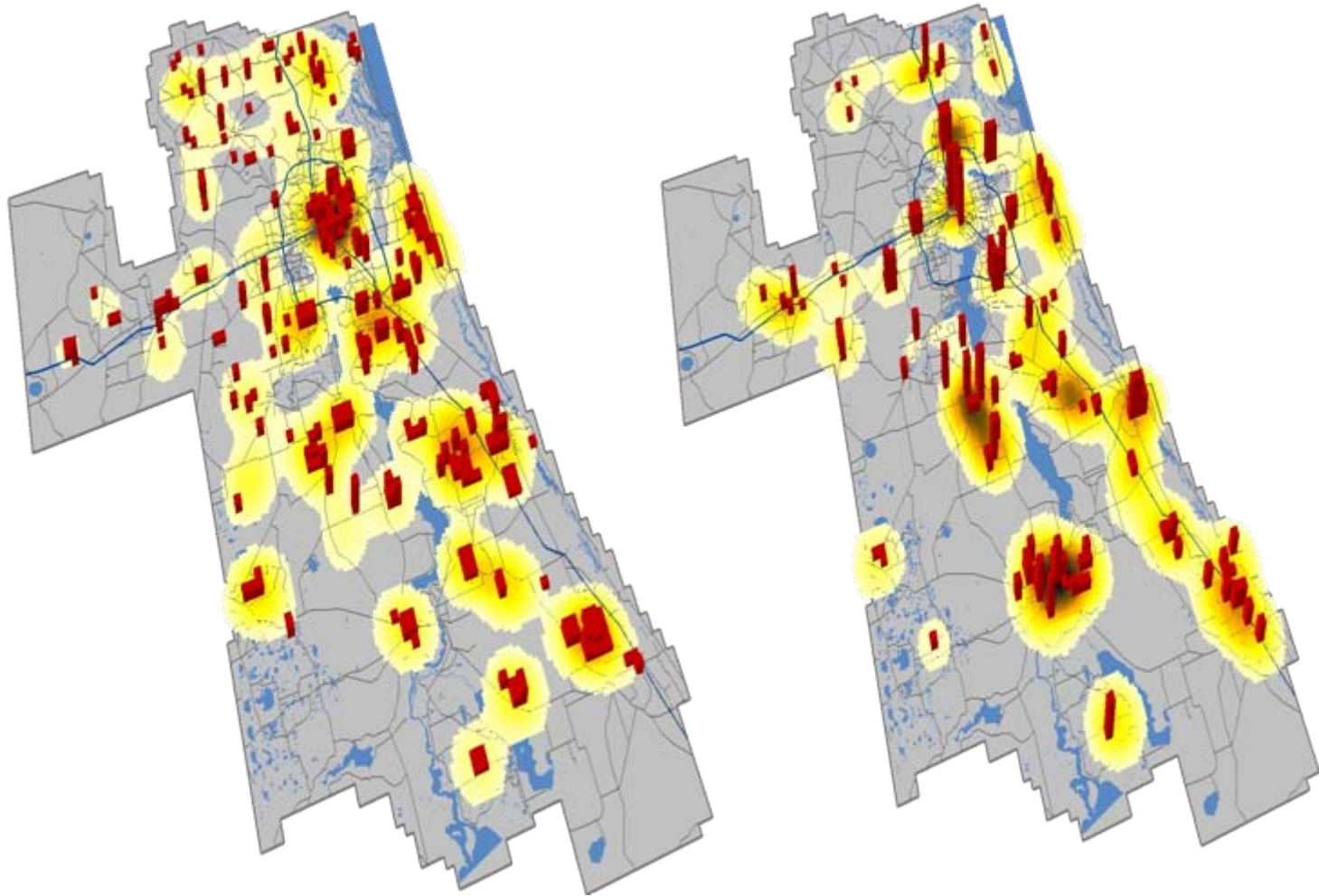
Reality Check First Coast Data Overview

Guiding Principles, Barriers, Solutions and Big Ideas from 300 leaders, prioritized by 450 at results session

Top two Guiding Principles were:

- Protect and conserve open spaces, agricultural lands, and natural resources.
- Promote compact and sustainable mixed use development

Patterns for Comparison



Data on the Patterns



Four Patterns Created at Reality Check First Coast: Dispersed, Multiple Growth Centers, Urban Compact, Corridor

- How they change the Jobs/Housing balance in the Region
- How they impact density in existing urban areas
- Total land consumed compared to the trend
- Total infrastructure requirements for each
- Composite of open space preserved

In Summary

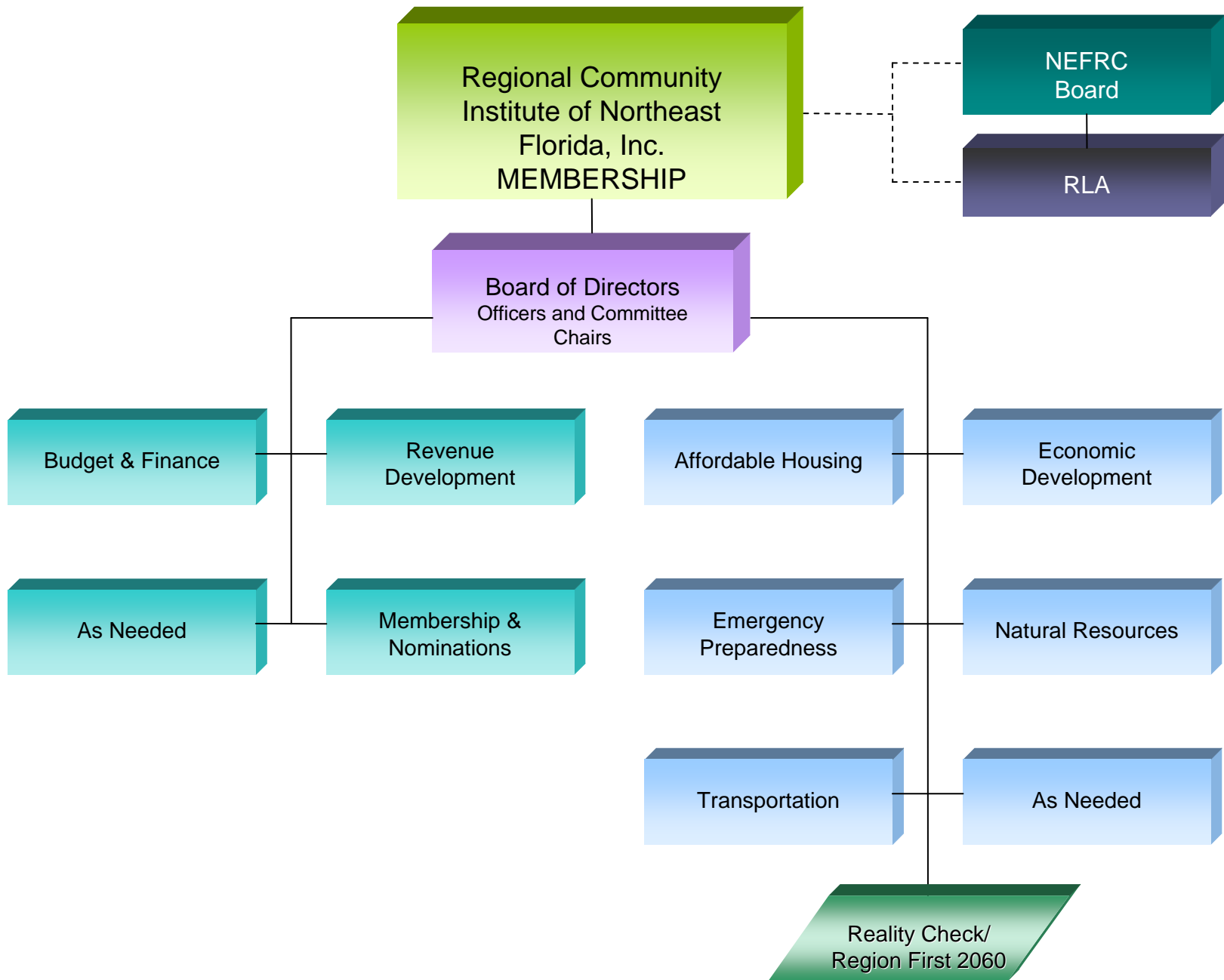
A background graphic consisting of a series of stylized human figures in a light blue color, holding hands in a line that recedes into the distance. The figures are simple, with no facial features, and are arranged in a slightly wavy pattern.

- RCFC gave us good inputs to a vision
 - Guiding Principles from Regional Leaders
 - Patterns for Comparison - may help with public input
- RCFC convened the region
 - 300 Regional Leaders
 - 150 attended Results Session
 - 50 Steering Committee
 - 100 Volunteers
- Kicked off discussion of a vision
- Not the only inputs

Considerations

A background graphic consisting of a line of five stylized human figures holding hands, rendered in a light blue color. Below this line is a faint, semi-transparent reflection of the same figures, creating a sense of depth and community.

- Reality Check First Coast Obligations
- Revenue Development
- Appointment of Committee Chairs



Committees and Chairs (must be members)

- Affordable Housing, Elaine Brown
- Economic Development
- Emergency Preparedness
- Natural Resources, Dr. Quinton White
- Transportation
- *Budget and Finance*
- *Revenue Development*
- *Membership and Nominations*

Affordable Housing Committee



- **Look to Regional Housing Assessment to:**
 - Identify data and sources
- **Institute to:**
 - Determine metrics
 - Develop policies
- **Timeline:**
 - Policies 3/11

Economic Development Committee



- **Look to Comprehensive Economic Development Strategy for:**
 - Data
 - Programs (Strategic Issues and Policies)
 - Metrics
- **Institute to:**
 - Vet Policies and Metrics
- **Timeline:**
 - 9/09 CEDS
 - Policies 3/11

Emergency Preparedness Committee



- **Look to Statewide Evacuation Study for:**
 - Data
 - Methodology for Analysis
 - Identification of Strategic Issues
- **Institute to:**
 - Determine policies and metrics
- **Timeline:**
 - 8/10 for Study
 - Policies 3/11

Natural Resources Committee

- **Look to RCFC for some input to:**
 - Identify data and sources
 - Suggest metrics and priority of resources
- **Institute to:**
 - Develop policies, resource list and metrics
- **Timeline:**
 - Policies 3/11

Transportation Committee



- **Look to RCFC for some input to:**
 - Identify data and sources
 - Suggest metrics
- **Institute to:**
 - Develop policies and metrics
- **Timeline:**
 - Policies 3/11

Input, the Vision and the SRPP



- Visioning in all seven counties and Youth exercise (10-12/09)
- Input through Committees (throughout 2010)
- Regional Report Card (2010)
- Community Outreach (2-9/10)
- An Image of the Vision (10-12/10)
- Goals and Policies for the Vision (1-3/11)
- Institute consideration of Draft Vision (4-6/11)
- Institute recommendation to NEFRC for SRPP (9/11)

Proposed Meeting Schedule

- Full Board: Quarterly (First Thursday in Sept., Dec., March, June)
- Committees: Monthly or as needed

The image features a row of five stylized human figures in a light blue-grey color, holding hands. Below each figure is a corresponding shadow in a darker, brownish-grey tone, creating a sense of depth. The background is a soft, light beige gradient. The word "Questions?" is centered in the middle of the image in a bold, black, sans-serif font.

Questions?