

# Implementing Our Regional Vision

Presented to  
**Regional Community Institute  
of  
Northeast Florida**

Thursday, June 23, 2011

Presented by:  
**Shelley Lauten**  
President, *myregion.org*

[myregion.org](http://myregion.org)



# Central Florida Partnership

*A regional partnership where leaders are in the best position to collaborate and take decisive action to advance prosperity and quality of life*

Regional Research  
&  
Regional Resolves

Regional  
Entrepreneurial  
System

Regional  
Advocacy

Regional  
Leadership



Organizational Structure





- Started in 1999 to encourage regional collaboration
- Began with seven (7) Counties: Brevard, Lake, Orange, Osceola, Polk, Seminole and Volusia
  - 86 Cities
- Includes public, private and civic leaders

# Key Question

**How Can Central Florida Compete in the Global Economy and Maintain a High Standard Quality of Life?**



**Key Question**

CONNECTING OUR COMMUNITIES

**myregion.org**





# Identification of Regional Priorities

- **Economic Leadership**
- **Education**
- **Environment**
- **Quality of Life**
- **Smart, Quality Growth**
- **Fragmentation/Collaboration**



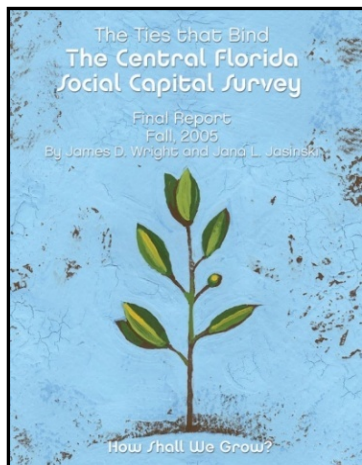
**Regional Priorities**

CONNECTING OUR COMMUNITIES

**myregion.org**

# Regional Research and Implementation

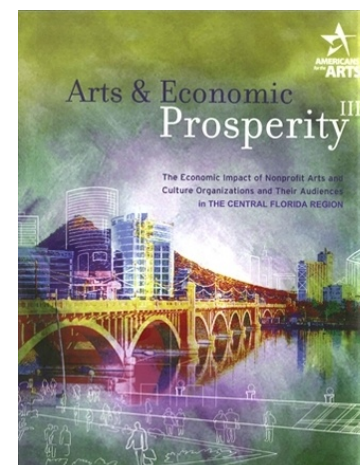
## 2005-2007



Central Florida's Quality of Life  
Demographics and Social Services White Paper  
Submitted to the [myregion.org](http://myregion.org) Board of Directors  
[myregion.org](http://myregion.org) Demographics and Social Services Implementation Team

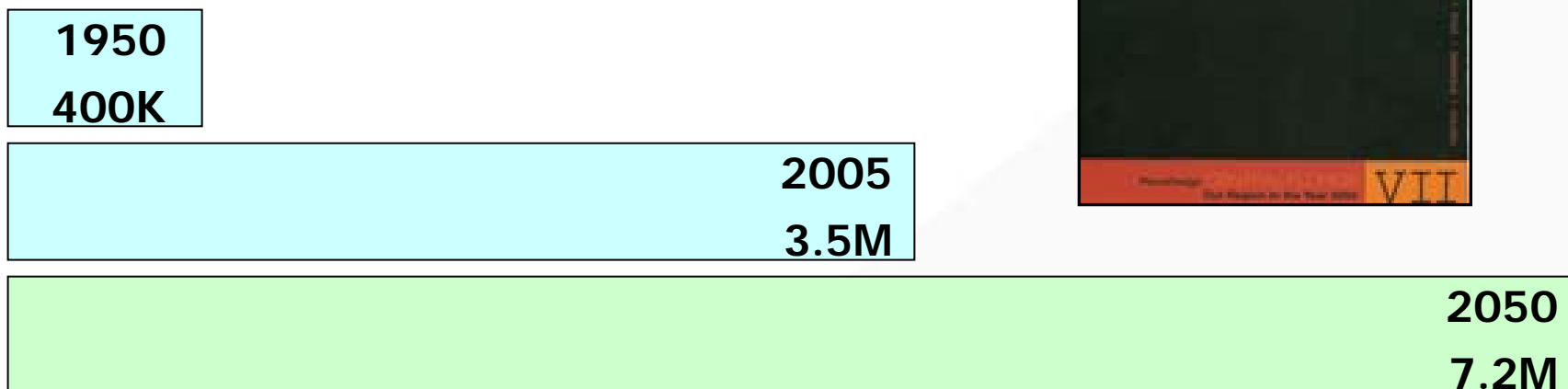


August 8, 2006



# 2003 Research: PennDesign Central Florida

## Population Projections from 2005-2050



Population



# How Shall We Grow?



POLK TRANSPORTATION PLANNING ORGANIZATION



Partners





# Engagement

200 Presentations

18 months



20,000 Citizens

600 Regional Leaders

## How Shall We Grow?

Engagement

CONNECTING OUR COMMUNITIES

[myregion.org](http://myregion.org)



# The Choices We Make Today . . . Impact Our Future

**2050 - TREND**



**2050 - VISION**



# How Do We Achieve the Vision?

## Focus on Six Regional Principles:

**PRESERVE**... open space, recreational areas, farmland, water resources, and regionally significant natural areas.

**PROVIDE**... a variety of transportation choices.

**FOSTER**... distinct, attractive, and safe places to live.

**ENCOURAGE**... a diverse, globally competitive economy.

**CREATE**... a range of obtainable housing opportunities and choices.

**BUILD**... communities with educational, health care, and cultural amenities.



# Implementing the Vision



Regional Vision

CONNECTING OUR COMMUNITIES

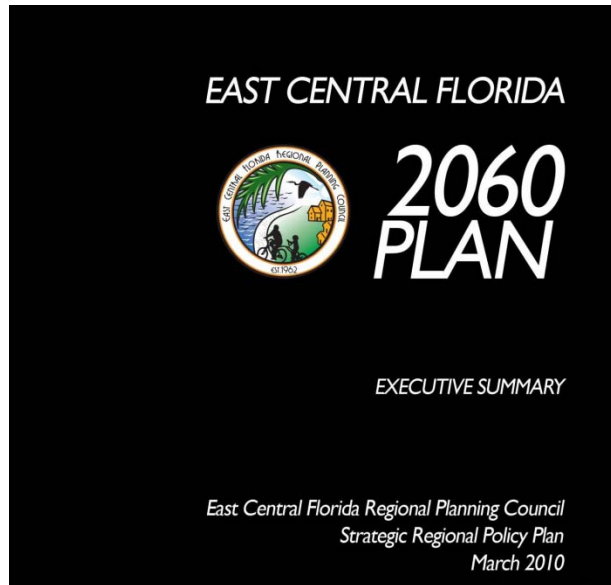
myregion.org



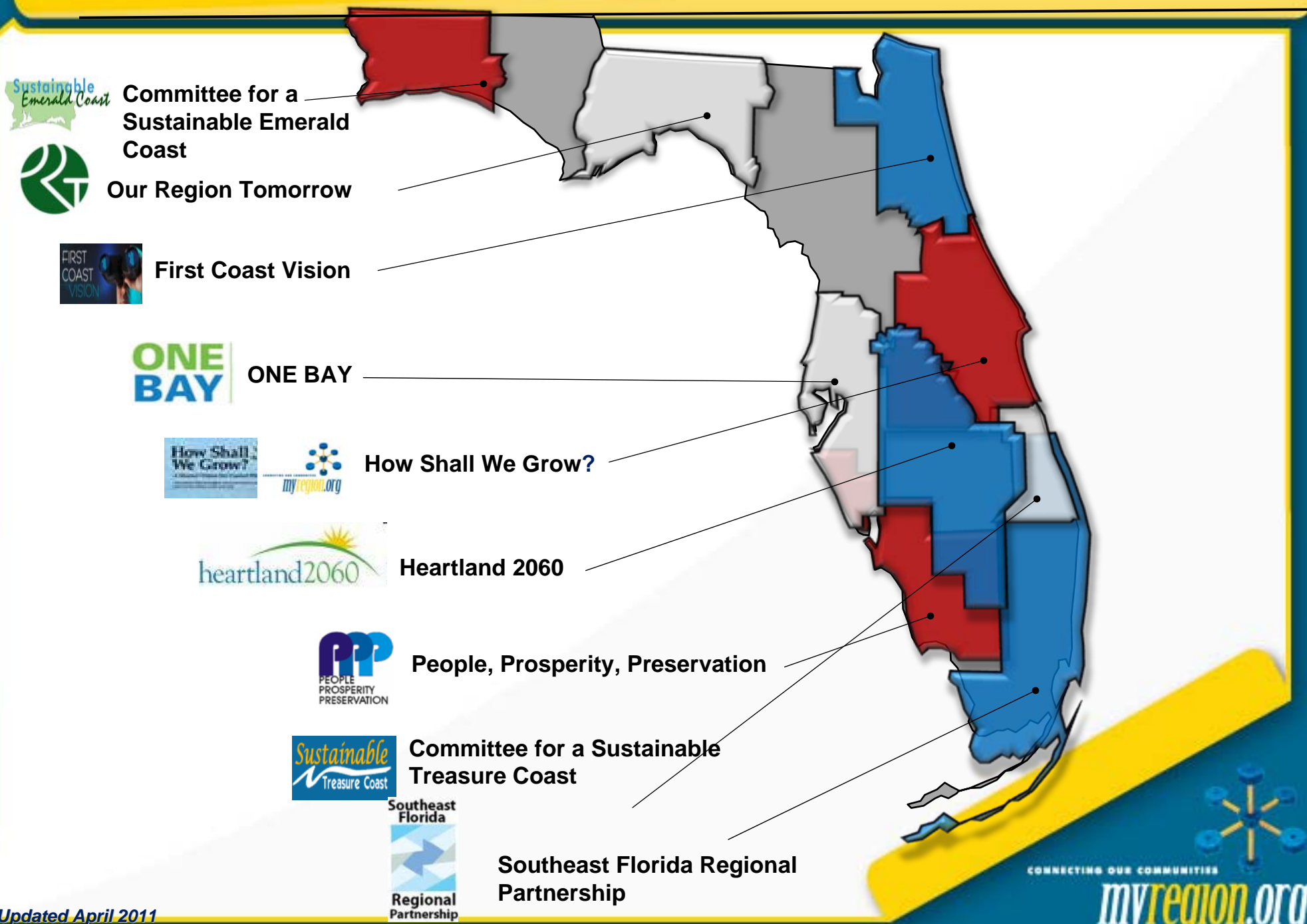
# Implementing the Vision



# Implementing the Vision



# Florida's Regional Visioning Processes



Committee for a Sustainable Emerald Coast



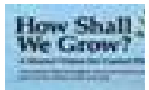
Our Region Tomorrow



First Coast Vision



ONE BAY



How Shall We Grow?



Heartland 2060



People, Prosperity, Preservation



Committee for a Sustainable Treasure Coast

Southeast Florida



Southeast Florida Regional Partnership



# Working Together to Implement the Vision





# Implementing Our Regional Vision

Presented to  
**Community Institute  
of  
Northeast Florida**

Thursday, June 23, 2011

Presented by:  
**Shelley Lauten**  
President, *myregion.org*

[myregion.org](http://myregion.org)

