

The Regional Community Institute of Northeast Florida, Inc.



Congratulations,
Regional Leadership
Academy Graduates!
Welcome to the
Institute!

The Regional Community Institute of Northeast Florida, Inc.

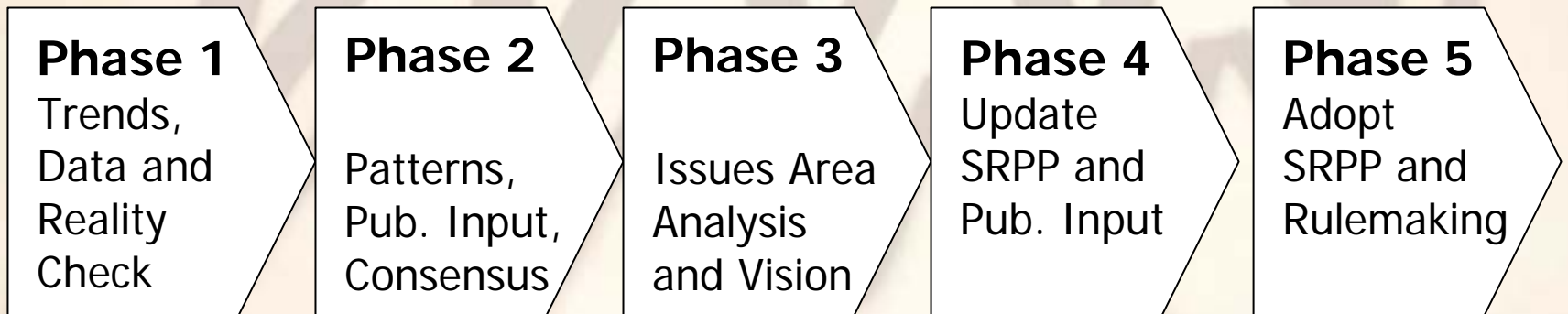


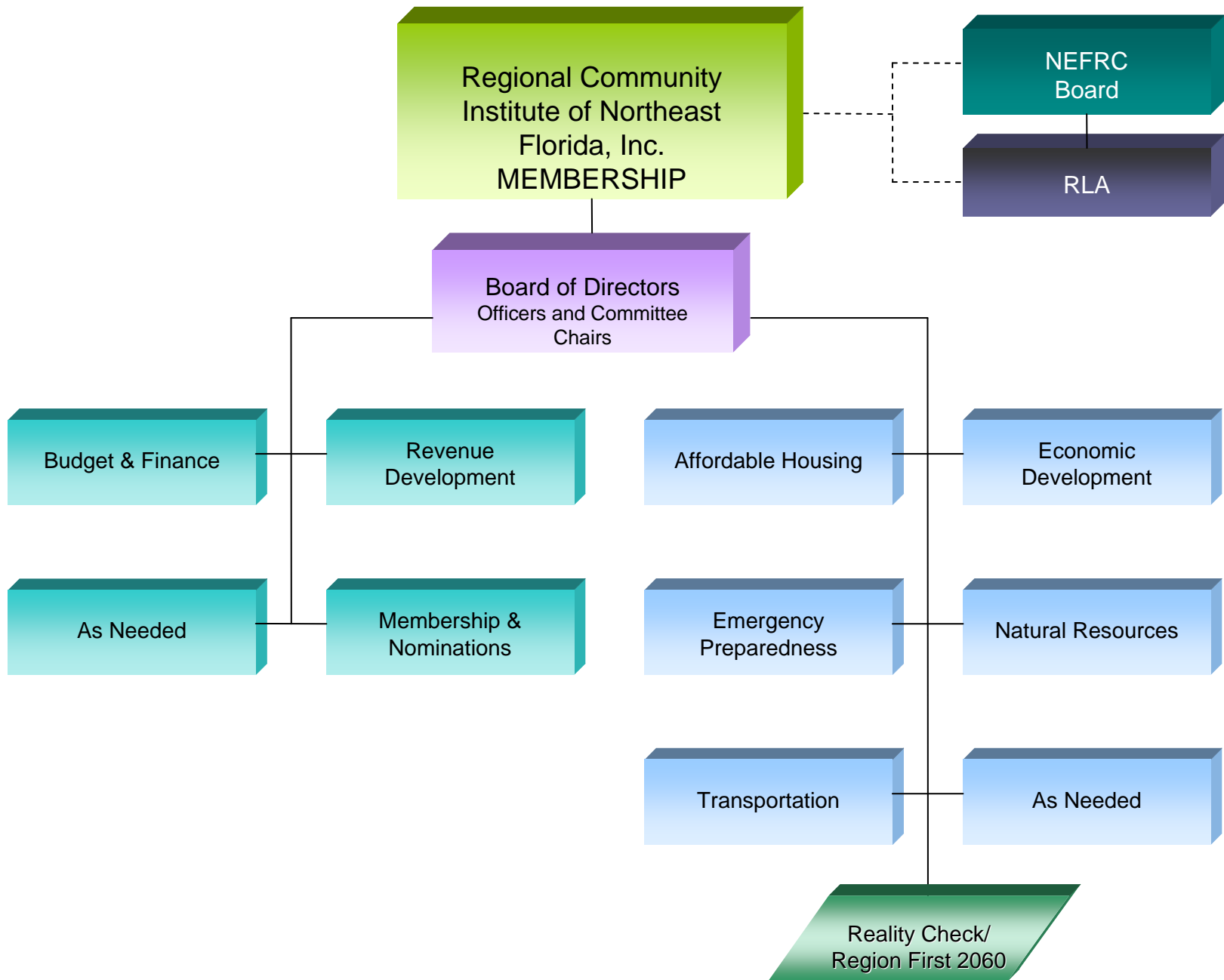
Work Program
Presentation to Regional Community Institute
Full Membership Meeting September 3, 2009

Margo Moehring,
Director of Planning & Strategic Initiatives
Northeast Florida Regional Council

First Coast Vision Flowchart

Phases overlap
Monitoring throughout all phases





Sign Up for a Committee, or Recommend Someone

- Affordable Housing
- Economic Development
- Emergency Preparedness
- Natural Resources
- Transportation
- Budget and Finance
- Revenue Development
- Membership and Nominations

Affordable Housing Committee



- **Look to Regional Housing Assessment to:**
 - Identify data and sources
- **Institute to:**
 - Determine metrics
 - Develop policies
- **Timeline:**
 - Policies 3/11

Economic Development Committee



- **Look to Comprehensive Economic Development Strategy for:**
 - Data
 - Programs (Strategic Issues and Policies)
 - Metrics
- **Institute to:**
 - Vet Policies and Metrics
- **Timeline:**
 - 9/09 CEDS
 - Policies 3/11

Emergency Preparedness Committee



- **Look to Statewide Evacuation Study for:**
 - Data
 - Methodology for Analysis
 - Identification of Strategic Issues
- **Institute to:**
 - Determine policies and metrics
- **Timeline:**
 - 8/10 for Study
 - Policies 3/11

Natural Resources Committee

- **Look to RCFC for some input to:**
 - Identify data and sources
 - Suggest metrics and priority of resources
- **Institute to:**
 - Develop policies, resource list and metrics
- **Timeline:**
 - Policies 3/11

Transportation Committee



- **Look to RCFC for some input to:**
 - Identify data and sources
 - Suggest metrics
- **Institute to:**
 - Develop policies and metrics
- **Timeline:**
 - Policies 3/11

Input, the Vision and the SRPP (The Work Program)

- Visioning in all seven counties and Youth exercise (10-12/09)
- Input through Committees (throughout 2010)
- Regional Report Card (2010)
- Community Outreach (2-9/10)
- An Image of the Vision (10-12/10)
- Goals and Policies for the Vision (1-3/11)
- Institute consideration of Draft Vision (4-6/11)
- Institute recommendation to NEFRC for SRPP (9/11)

Proposed Meeting Schedule

- Full Board: Quarterly (First Thursday in Sept., Dec., March, June)
- Committees: Monthly or as needed

The image features five stylized human figures in a row, holding hands. They are rendered in a light blue-grey color. Below each figure is a darker, semi-transparent shadow of the same figure, creating a sense of depth. The background is a soft, light beige gradient. The word "Questions?" is centered in the middle of the image in a black, sans-serif font.

Questions?