

City of Fort Lauderdale

Adaptation Action Area Pilot



Community Resiliency Initiative Focus Group

April 8, 2013



Presented by:

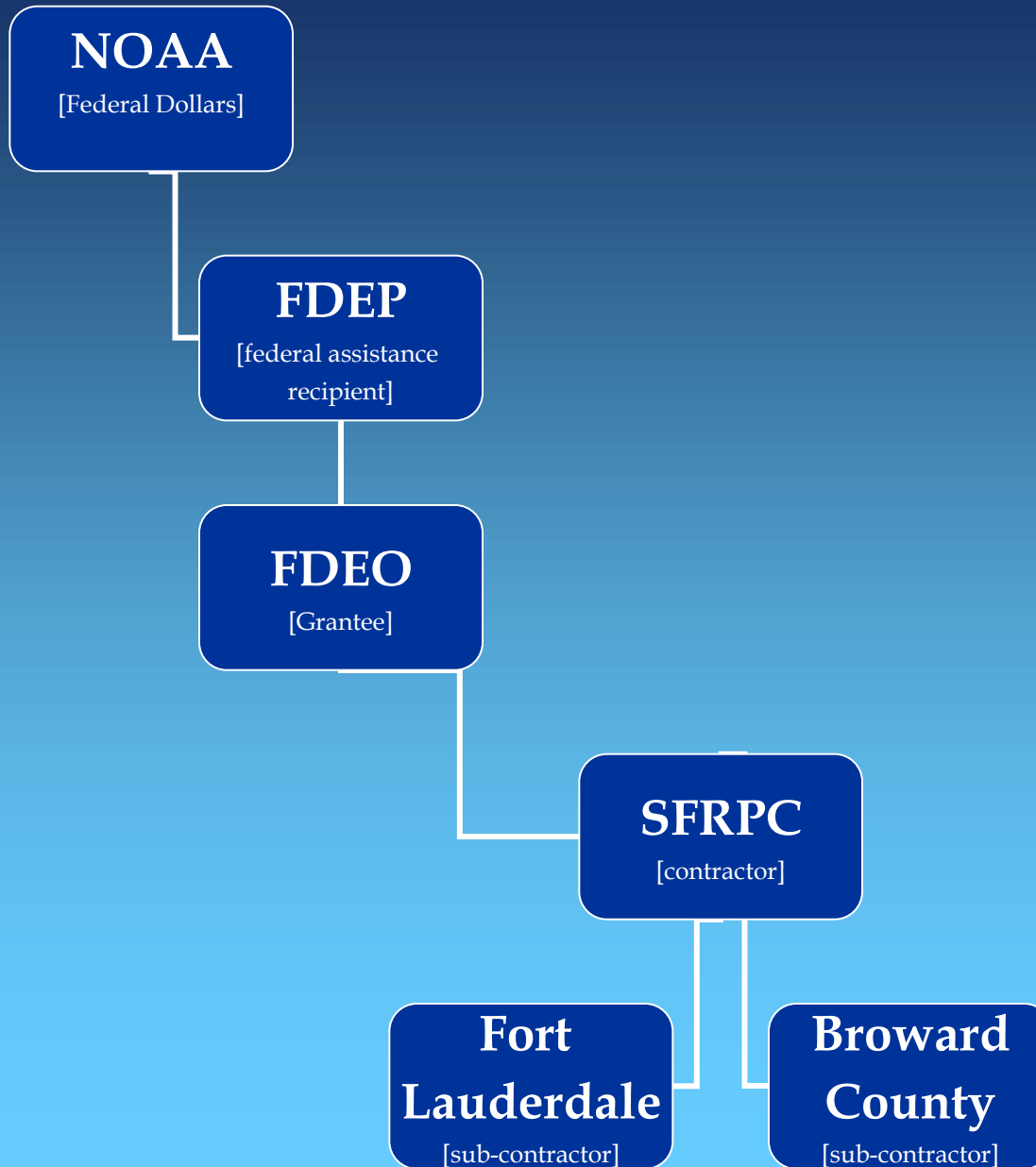
Rachel M. Kalin, South Florida Regional Planning Council

Jim Koeth, City of Fort Lauderdale

Adaptation Action Area

As defined by the Florida State Community Planning Act, an optional comprehensive plan designation for areas that experience coastal flooding and that are vulnerable to the related impacts of rising sea levels for prioritizing funding for infrastructure and adaptation planning.

Project Background



Project Tasks

- I. Compile current state and national policy options for Protection, Accommodation and Retreat climate change adaptation strategies *[SFRPC - June 28, 2013]*
- II. Chose policy options and an AAA designation to be proposed for adoption into Fort Lauderdale's Comprehensive Plan *[Fort Lauderdale/Broward County – December 31, 2013]*
- III. Create a “how to” guidance document, video, and podcast for Florida coastal communities based on the adaptation policy research and Fort Lauderdale's Comprehensive Plan process *[SFRPC – June 30, 2014]*

Project Status – Task I.

Adaptation Strategies:

- **Protection** - hard & soft structurally defensive measures to mitigate impacts of rising seas that allow structures and infrastructure to remain unaltered.
- **Accommodation** - physically alter the design of structures or infrastructure systems.
- **Retreat** - removal of existing development or infrastructure and/or relocation to other areas, and the prevention of future development in high risk areas.

Pilot Community

Why the City of Fort Lauderdale?

Total Population (2012; estimated): 166,000

Miles of Public Beach: 7

Miles of Navigable Waterways: 165

Pilot Community

Why the City of Fort Lauderdale?



Photo by Art Seitz

City's great interest in the project coupled with its vulnerability to:

- coastal flooding
- beach erosion,
- extreme high tides,
- salt water intrusion,
- rising sea levels, and
- many miles of tidally influenced waterways

Pilot Community

Why the City of Fort Lauderdale?

Extensive involvement in the Southeast Florida Regional Climate Compact.



MAYORS' CLIMATE ACTION PLEDGE

A Region Responds to a Changing Climate

Southeast Florida Regional Climate Change Compact Counties

Regional Climate Action Plan

October 2012



Pilot Community

Why the City of Fort Lauderdale?

Local News Channel 10 Video: Mayor Jack Seiler at SR A1A



Events Overview

October 2012

**Hurricane Sandy off-shore in the Atlantic Ocean
Weakened natural and man-made armory**

November 2012

High Seasonal Tides

**Roadway, seawall, sidewalk and signal mast arm
destruction**

October 2012



Photo by Steve Lange, Sun-Sentinel



Photo by Steve Lange, Sun-Sentinel

October 2012



Photo by Steve Lange, Sun-Sentinel



Photo by Susan Stocker, Sun-Sentinel

October 2012



Photo by Joe Cavaretta, Sun-Sentinel



City of Fort Lauderdale photo



Photo by Steve Lange, Sun-Sentinel

November 2012



Photo by Art Seitz



Photo by Art Seitz



Photo by Art Seitz

November 2012



November 2012



Photo by Steve Lange, Sun-Sentinel



Photo by Steve Lange, Sun-Sentinel



Photo by Steve Lange, Sun-Sentinel

November / December 2012



Photo by Art Seitz



Photo by Art Seitz



Photo by Art Seitz

Community Meeting: December 11, 2012



FDOT



FDOT



TODAY IS THE LAST DAY TO SHARE YOUR IDEAS TO RESTORE A1A

As the Florida Department of Transportation (FDOT) works to repair the section of A1A damaged by Hurricane Sandy and the Thanksgiving weekend storms, the City of Fort Lauderdale is looking for your ideas to renourish the beach and restore this vital section of roadway.

We encourage you to visit restorea1a.com by Friday, March 15, to submit your ideas for the section of A1A between NE 14th Court and NE 18th Street. For more information and project updates, visit www.fortlauderdale.gov/a1a.

We greatly appreciate the input that has been submitted to date, and would like to thank our neighbors for sharing their ideas with us.



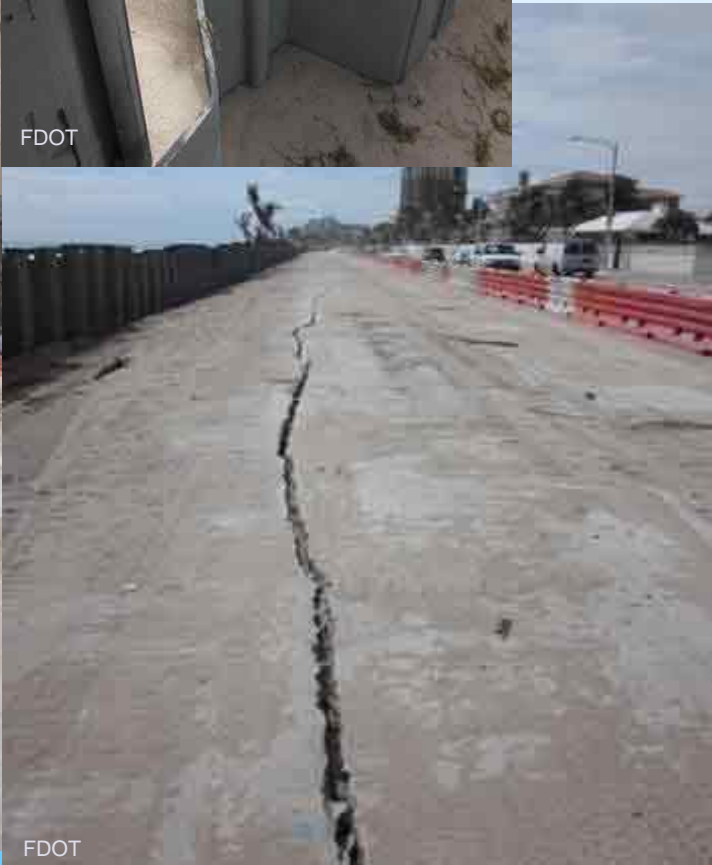
January/February 2013



January/February 2013



January/February 2013



FDOT

FDOT

FDOT

FDOT

March/April 2013





Fort Lauderdale: Pilot Goals

- City to prepare AAA's policy options for inclusion into its Comprehensive Plan.
- Link adaptation action policies to infrastructure capital planning and budgeting
- Play a significant role in the creation of a FDEO AAA guidebook.

Fort Lauderdale: Pilot Steps

- Commence an outreach campaign on adaptation planning.
- Gain community input on adaptation options. Outreach mechanisms to include public workshop(s) and listening sessions.
- Propose Comprehensive Plan “Adaptation Action Area” policy option amendments to the Local Planning Agency (Planning and Zoning Board) for approval.
- Present proposed amendments to the City Commission for review and transmittal to the State Land Planning Agency (FDEO) and appropriate review agencies.
- If amendments are adopted, integrate adaptation policies into other City plans and programs (Stormwater Management Plan and Hazard Mitigation Program).

Broward County Comprehensive Plan

*New Climate Change Element and related
Land Use designation of Priority Planning
Areas, adopted in early 2013.*



News Release

Broward County Adopts New Climate Change Element into Comprehensive Plan

DATE: February 20, 2013

MEDIA CONTACT: Dr. Jennifer Jurado, Director

Broward County Natural Resources Planning and Management Division

PHONE: 954-519-1484

EMAIL: jjurado@broward.org

Contact

Rachel M. Kalin

rkalin@sfrpc.com

954.985.4416

www.sfrpc.com

Jim Koeth

jkoeth@fortlauderdale.gov

954.828.5276

www.fortlauderdale.gov

